

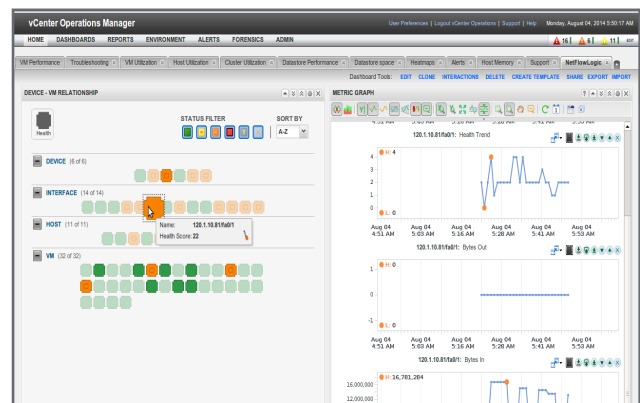


Comprehensive Visibility into Virtual and Physical Networks

VMware vCenter Operations Advanced and NetFlow Logic

Executive Summary

While the benefits of virtual networking are increasingly becoming understood, including fine grain segmentation, application personalization, and provisioning automation at the cloud portal level, one of the biggest operational concerns is the loss of visibility regarding how to trace and troubleshoot connectivity between the virtual and physical networking layers. Lacking traceability leads to longer time to resolution, and unacceptable outage time frames for many customers.



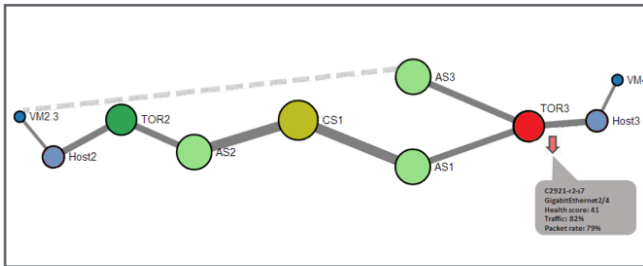
(Interface Health within NetFlow Logic Network Metrics Management Pack)

NetFlow Logic and VMware address this operational issue by leveraging the core platform capabilities of vCenter Operations Manager with NetFlow Logic's expertise in collecting and analyzing network health and path data, and representing this as a superset of data within vCenter Operations Manager. Resulting from this integration, at-a-glance administrators can quickly see the health of any network interface and or the combination interfaces that make up the forwarding path between two objects. They can drill into these network nodes, both virtual and physical that are reporting forwarding problems and quickly determine where and how to take corrective actions.

Moreover, the coupling of these two products offers a highly scalable approach to path visualization, virtual and physical. The collection and analysis of the flow data is performed by NetFlow Logic; while the higher level correlation of data, graphic representation, and health trending data is performed by vCenter Operations Manager. This approach solves a majority of the path visualization and problem determination concerns for administrators. Specifically, NetFlow Logic's new Network Metrics Management Pack enables Virtual Administrators to gain complete visibility into their physical networks for the first time.

Solution Brief

NetFlow Logic and VMware: jointly addressing operational visibility in virtualized environments



(Virtual and Physical Network Topology within NetFlow Logic)

The NetFlow Logic Network Metrics Management Pack also provides detailed operational information about virtual network traffic, thus enabling correlation of virtual and physical network information.

Solution Benefits

- Addresses the top operations concern when deploying virtual networking - Logical to physical network topology and connectivity visibility
- Offers a consolidated platform, in which vCenter operations is the core product for compute, network, and storage visibility
- Leverages NetFlow Logic's industry leading expertise in path trace technologies including IPFIX, NetFlow, and sFlow with a Management Pack plug-in, developed by NetFlow Logic, into vCenter Operations
- Minimizes tool sprawl via VMware's Management Pack plug-in approach with industry leading technology providers
- Reduces customer training and deployment costs by having one core platform
- Offers increased scalability, by leveraging the correlation of flow records within NetFlow Logic's processing engine, and the analysis, summarization and display representation within vCenter Operations Manager
- Provides a tightly integrated solution via the close collaboration work with VMware's IPFIX, NSX, and vCenter Operations manager technologies.

The joint NetFlow Logic and VMware solution enables organizations to embrace network virtualization without sacrificing operational visibility. It enables network operations to find and fix network and application performance, no matter the architecture - traditional, server, virtualized, or fully virtualized data centers.

For more information or to register for an evaluation, please visit: vmware.netflowlogic.com